

# LANGSTONE HARBOUR BOARD

## LANGSTONE HARBOUR LOCAL NOTICE TO MARINERS NO. 03 OF 2024

### Collapse of Main Channel Marker Pile at Broad Lake - Bedhampton Quay and Broadmarsh Slipway Approach

**Mariners are advised** that “Pile A - South Lake” (N04050) marking the starboard entrance of the approach channel in Broad Lake leading to Chalk Dock Lake, Broadmarsh Slipway and the Bedhampton Quay has collapsed.

**Pile A - charted position:**

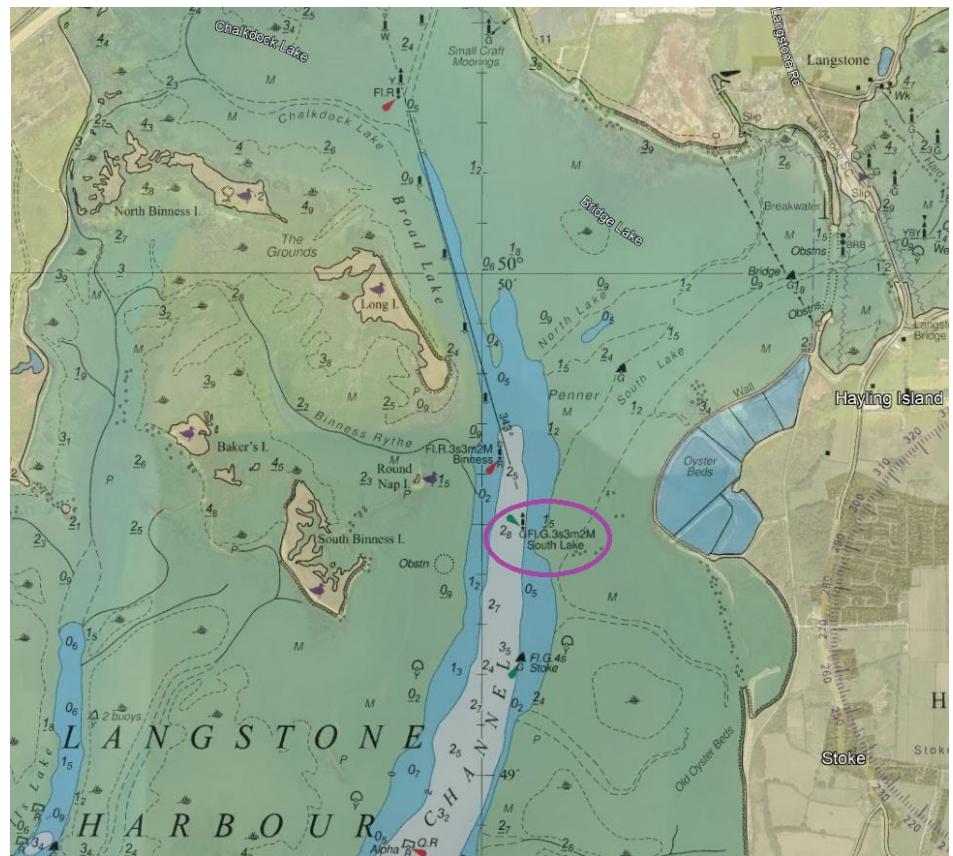
**50° 49.490’N,**

**000° 59.870’W**

**Pile A - Character:**

**Flashing Green  
FI G 3s3m2M**

The pile is not considered to be a hazard to navigation and local survey has confirmed that it is lying on the seabed with no significant changes to charted depths in the area.



**Due to the poor state of the piles marking this channel, mariners are advised to keep at least 5m clear of any navigation piles in the area and especially to avoid tying-off onto any pile.** [Byelaw 8](#) – Vessels not to be made fast to navigation buoys or marks, applies.

The Broad Lake Channel continues to be navigable using remaining port-hand piles and the transit beacons at the north end of this channel. The owner of the pile – Tarmac Trading Limited – has been informed.

**Owners, Agents, Charterers, Marinas, Yacht Clubs and Recreational Sailing Organisations should ensure that the contents of this Notice are made known to the Masters or persons in charge of their vessels or craft.**

B Johnson, Harbour Manager

Harbour Office, Ferry Road,  
Hayling Island, Hampshire, PO11 0DG

15<sup>th</sup> March 2024